

## Chemical analysis report

<b>Customer</b>	weaponsRx@Safe-mail.net
<b>Sample:</b>	
<b>- accepted</b>	February 14, 2018
<b>- completed</b>	February 16, 2018
<b>- name</b>	-
<b>- batch</b>	N/A
<b>- appearance</b>	Freeze dried white solid in glass vial with blue top
<b>- amount</b>	1 vial

<b>Analysis:</b>	<b>Method</b>	<b>Result</b>
<b>Identification</b>	RP-HPLC/DAD	<u>hGH</u>
<b>Total protein content</b>	UV/VIS	3.12 mg
<b>Limit of high molecular weight proteins</b>	SEC-HPLC/DAD	1.7%
<b>Chromatographic purity</b>	RP-HPLC/DAD	1.2%

Released by: analyzer1@protonmail.com

# RP-HPLC/DAD Analysis:

Data File C:\CHEM32\1\DATA\TEST\BLUE TOP 2018-02-15 03-56-45.D

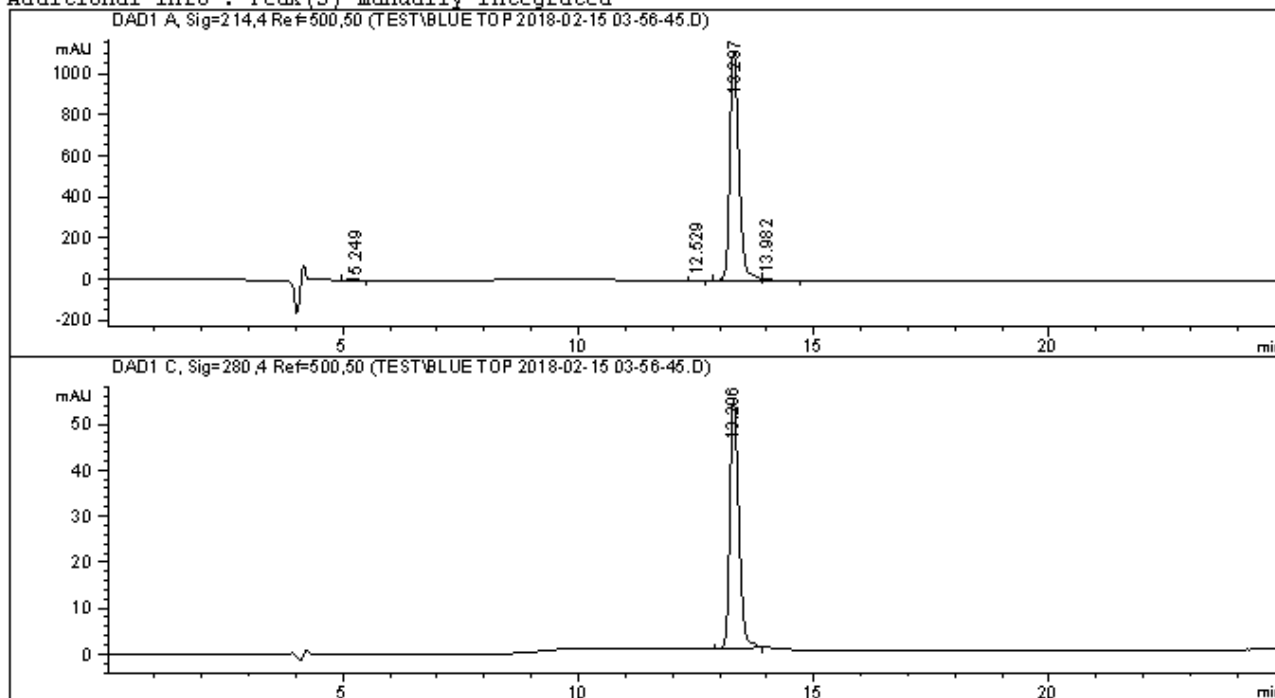
Sample Name: Blue top

```

=====
Acq. Operator   : SYSTEM
Sample Operator : SYSTEM
Acq. Instrument : 1260                      Location : P1-F-06
Injection Date  : 2/15/2018 3:58:06 AM
                                           Inj Volume : 10.000 µl

Acq. Method     : C:\CHEM32\1\METHODS\GH-RP.M
Last changed    : 1/23/2018 2:14:05 PM by SYSTEM
Analysis Method : C:\CHEM32\1\METHODS\TEST.M
Last changed    : 2/15/2018 4:46:13 AM by SYSTEM
                  (modified after loading)
  
```

Additional Info : Peak(s) manually integrated



## Area Percent Report

```

=====
Sorted By      : Signal
Multiplier     : 1.0000
Dilution       : 1.0000
Do not use Multiplier & Dilution Factor with ISTDs
  
```

Signal 1: DAD1 A, Sig=214,4 Ref=500,50

Peak #	RetTime [min]	Type	Width [min]	Area [mAU*s]	Height [mAU]	Area %
1	5.249	BB	0.1408	16.86089	1.80802	0.1102
2	12.529	BB	0.1592	16.32889	1.65376	0.1067
3	13.297	BV	0.2088	1.51163e4	1110.83142	98.7585
4	13.982	VB	0.1873	156.83620	12.58905	1.0247

Totals : 1.53063e4 1126.88225

Data File C:\CHEM32\1\DATA\TEST\BLUE TOP 2018-02-15 03-56-45.D  
Sample Name: Blue top

Signal 2: DAD1 C, Sig=280,4 Ref=500,50

Peak #	RetTime [min]	Type	Width [min]	Area [mAU*s]	Height [mAU]	Area %
1	13.296	BB	0.2058	723.20490	54.16772	100.0000

Totals :                               723.20490   54.16772

=====  
\*\*\* End of Report \*\*\*

# SEC-HPLC/DAD Analysis:

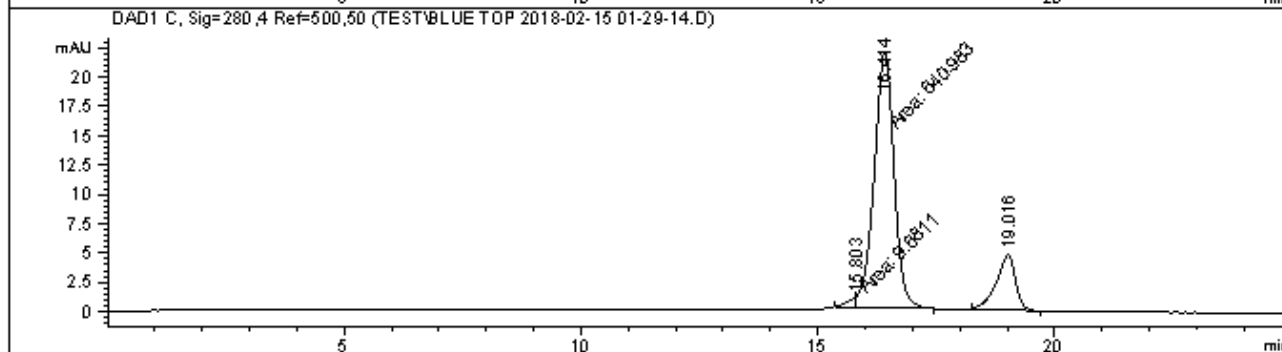
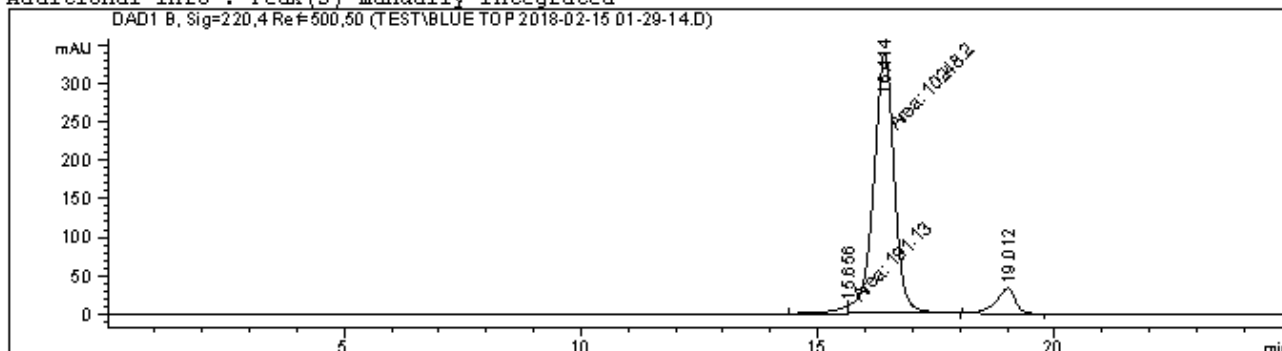
Data File C:\CHEM32\1\DATA\TEST\BLUE TOP 2018-02-15 01-29-14.D

Sample Name: Blue top

```

=====
Acq. Operator   : SYSTEM
Sample Operator : SYSTEM
Acq. Instrument : 1260                      Location : P1-F-06
Injection Date  : 2/15/2018 1:30:00 AM
                                           Inj Volume : 30.000 µl

Acq. Method     : C:\CHEM32\1\METHODS\GH-SEC.M
Last changed    : 2/15/2018 12:48:35 AM by SYSTEM
                 (modified after loading)
Analysis Method : C:\CHEM32\1\METHODS\TEST.M
Last changed    : 2/15/2018 4:46:13 AM by SYSTEM
                 (modified after loading)
Additional Info  : Peak(s) manually integrated
    
```



## Area Percent Report

```

Sorted By      : Signal
Multiplier     : 1.0000
Dilution       : 1.0000
Do not use Multiplier & Dilution Factor with ISTDs
    
```

Signal 1: DAD1 B, Sig=220,4 Ref=500,50

Peak #	RetTime [min]	Type	Width [min]	Area [mAU*s]	Height [mAU]	Area %
1	15.656	MF	0.2891	191.13029	11.01746	1.6821
2	16.414	FM	0.5041	1.02482e4	338.81393	90.1898
3	19.012	BB	0.3968	923.59845	33.17910	8.1282

Totals : 1.13629e4 383.01049

Signal 2: DAD1 C, Sig=280,4 Ref=500,50

Peak #	RetTime [min]	Type	Width [min]	Area [mAU*s]	Height [mAU]	Area %
1	15.803	MF	0.1849	9.68110	8.72841e-1	1.2393
2	16.414	FM	0.4881	640.98334	21.88533	82.0506
3	19.016	BB	0.3813	130.54076	4.75513	16.7102
Totals :				781.20520	27.51330	

=====  
\*\*\* End of Report \*\*\*